

DCN@MPLS: A Network Architectural Model for Dynamic Circuit Networking at Multiple Protocol Label Switching

Omar Y. Tahboub and Javed I. Khan
Networking and Multimedia Communication Lab
Computer Science Department
Kent State University
Kent, Ohio, 44242-0001

Abstract

In this technical report, we present DCN@MPLS a protocol extension to multi-protocol label switching technology that can dynamically assign time activated future routes to an MPLS enabled routing infrastructure. We assume that efficient route schedules have been computed by a separate optimization algorithm module linked to the DCN@MPLS route server. In this document we first present the DCN@MPLS architectural model. Next, we present the MPLS protocol extensions to support dynamic circuit networking.

I. Introduction

In this technical report, we present a network architectural model that implements dynamic circuit operation DCN at the Multi Protocol Labeling Switching MPLS domains namely *DCN@MPLS*. In addition, the MPLS protocol extensions are implemented by the DCN@MPLS route scheduling tier. These protocol extensions determine the set of label message signaling that enables time-scheduled route information to be distributed to the MPLS domain. More particularly, these extensions are related to the label distribution process handling *Constraint-Routing Label Distribution Protocol (CR-LDP)*.

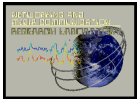
The rest of the paper is organized as follows; section II provides the architectural of MPLS protocol. Section III describes the client tier along with route scheduling. Section IV, describes the DCN@MPLS route scheduling tier. Section V describes the DCN@MPLS protocol extensions to MPLS CR-LDP. Finally, section VII concludes the paper.

II. Architectural Overview

This DCN@MPLS network architectural model is representing by the four-tier architecture shown in Fig.1.

The DCN@MPLS architecture is composed of four tiers: edge, network, routing and scheduling. The edge tier represents the architecture's acquisition entity to which on-demand data transfers requests are submitted. The network tier represents the physical MPLS network through which data transfers are streamed. The routing tier handles all on-demand data transfer requests, where an end-to-end route is computed and yet scheduled for each request. The scheduling tier represents DCN abstraction layer for the MPLS network, which performs route schedule dissemination to the label switch routers of the network tier.

In addition, DCN@MPLS is a set of protocols extension to the MPLS CR-LDP. These extensions describe three DCN primitive route operations: inquiry, response and schedule dissemination. Further, three route dissemination models are described: the first is centralized implementable by classic routing protocols. On the hand, the other two are distributed suitable for intermittent networks.



In the proceeding discussion, we elaborate each tier in the DCN@MPLS network architecture according to following sequence. The MPLS network domain tier, the client tier, the route scheduling tier and finally the DCN@MPLS route scheduling tier.

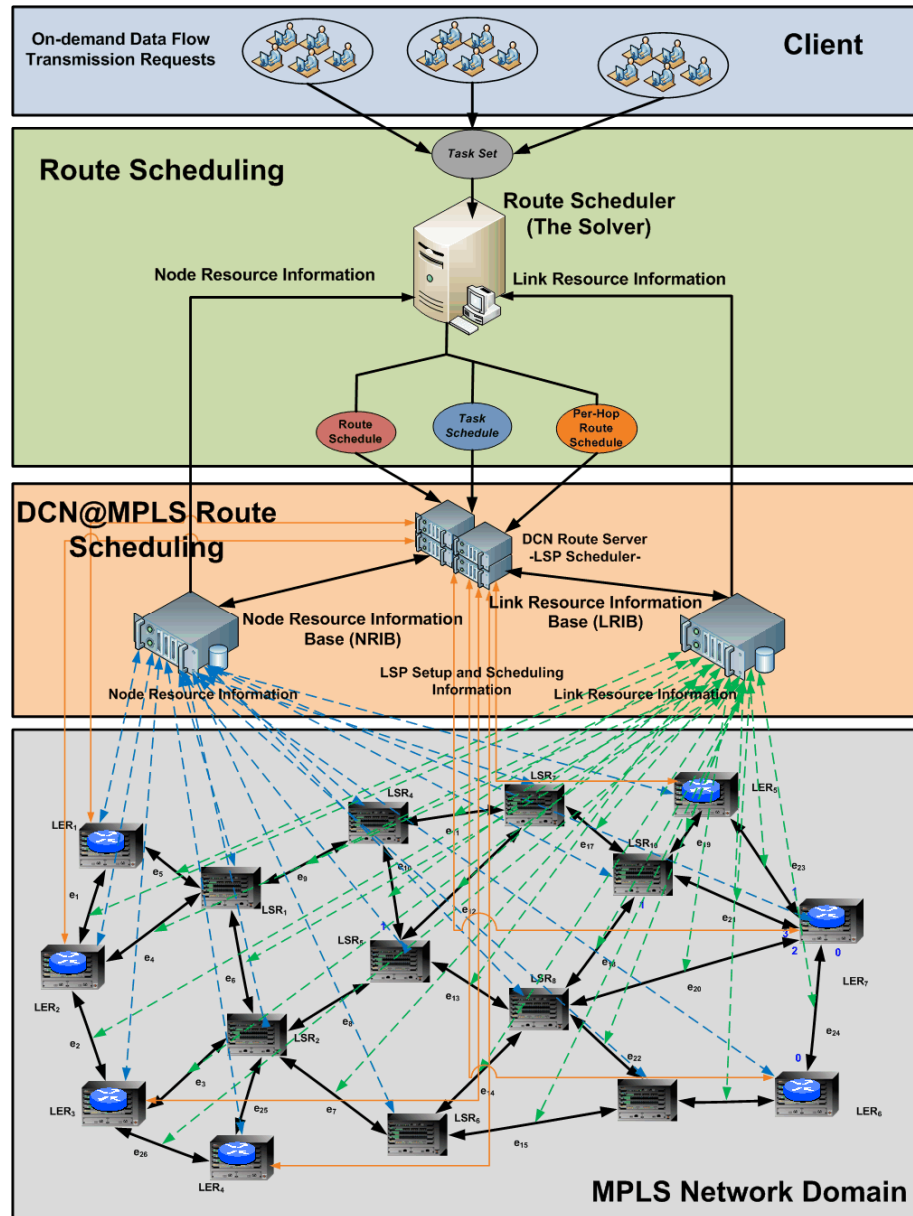
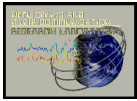


Fig.1: The DCN@MPLS Network Architecture

III. The MPLS Network Domain Tier

In this section we introduce Multiple Protocol Label Switching MPLS and describe the MPLS network domain tier.



A. Multiple Label Protocol Switching

Multiple Label Protocol Switching MPLS will play a major role in techniques of routing, switching and forwarding packets through the next generation network in order to satisfy the future demands of Internet applications. [5]

The actual data transmission in MPLS occurs on a *Label-Switched Path (LSP)*, where a LSP is sequence of labels at each and every node along the path between the source and the destination. The establishment of LSPs is performed either in control-driven or data-driven fashion. In former, LSPs are established ahead of the data transmission of data transmission, while in the latter these paths are established upon the detection of a data flow [3].

In addition, Labels that form the underlying protocol-specific identifiers are distributed using *Label Distribution Protocol (LDP)*. Each data packet encapsulates and carries the labels during its journey from the source to the destination. MPLS labels are fixed-length inserted into the packet header between layer-2 and layer-3 headers, which enables high-speed switching.

An instance of a MPLS network domain is presented in the Fig.2. It can be noted that this network domain consists of two types of nodes (routers): *Label Edge Router (LER)* and *Label Switch Router (LSR)*.

The first type represents the devices that operate at the edge of the access network and MPLS network. LERs forward traffic to the MPLS network after establishing the LSP. Moreover, these devices support multiple ports connected to various networks such as ATM, Frame Relay and Ethernet. The second type represents the set high-speed routes deployed at the core of the MPLS network that participates in the LSP establishment using the appropriate protocol. Further, LSRs constitutes an LSP.

MPLS supports differentiated services through *Forward Equivalence Classes (FEC)*s. A FEC represents a group of packets sharing the similar transport requirements; all packets belonging to the same FEC are given the same treatment en-route to the destination. These classes are based on service requirements for a given set of packets (flow) or for an address prefix. Moreover, *FEC* packet assignment is done at the LER. Each LSR builds a *Label Information Base (LIB)* to determine how a packet must be forwarded based on its label it encapsulates. In addition, a label identifies the path a packet should traverse, since it is encapsulated into the packet header.

B. The MPLS Network Domain

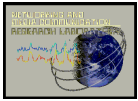
Generally, a MPLS domain is represented by the directed multi-graph $G = (N, E)$, where $N = \{n_1, n_2, \dots, n_m\}$ be the set of m label switch routers and $E = \{e_1, e_2, \dots, e_n\}$ be the set of edges (links), each edge $e_i \in E$ connects a pair of label switch routers $(n_u, n_v) \in N$.

For each switch router $n_i \in N$, c_i denotes its service rate in bits per second (bps) and b_i denotes the available storage buffer in bits. For each edge $e_i \in E$, bw_i denotes its bandwidth (bps) and l_i denotes its propagation delay in seconds.

The MPLS domain tier is elaborated in Fig.1 consists of seven label edge routers $\{LER_1, LER_2, \dots, LER_7\}$ and ten label switch routers $\{LSR_1, LSR_2, \dots, LSR_{10}\}$ and twenty-four links $\{e_1, e_2, \dots, e_{24}\}$. This tier collects node (LSR) and link resources of information to be forwarded to the DCN@MPLS tiers. As shown in the figure below link resource information is pointed by dashed green arrows, while node resources information is pointed by blue dashed arrows. Moreover, each LER node in the domain obtains the time-scheduled route information from the DCN@MPLS tier. Each LER is responsible of setting up the time-scheduled route from itself to the egress LER according the LSP time-scheduling information.

IV. The Client Tier

The Client tier represents the user-groups requesting on-demand data flow transmissions via the underlying the MPLS network domain.



Clients of this architecture are multi-disciplinary including science, business, engineering, education, medicine, and others. For instance, High Definition (HD) video teleconferencing used in business management and distance learning the enables real-time communication between parity separated by continentals. Moreover, telemedicine allows specialists to collaborate in conducting sophisticated operations around the world. These applications commonly have two features: bandwidth-intensive and on-demand. Bandwidth-intensive applications involve massively large data transfers in the orders Gigabytes and yet Terabytes per day. Moreover, the on-demand feature implies that dedicated end-to-end circuits should be established, and network resources have to be allocated in advance.

Based on these two features, it can be understood that data flow transfer requests represents forward equivalent classes which bundles the data flow traffic from the ingress to the egress LERs. Therefore a FEC is further presented by a instance t defined by the tuple (u, v, o, dl, s) , where u is the ingress LER, v is the egress LER, o is the task origination time in seconds, dl is the task completion time deadline in seconds, and s is the task size in bits. Given a MPLS domain, the attributed description of the task t_i is described by Fig. 2.

In addition, client-initiated tasks are grouped and then sent to the route scheduling layer, whose responsibility of computing the timed-schedules routes in the MPLS network domain.

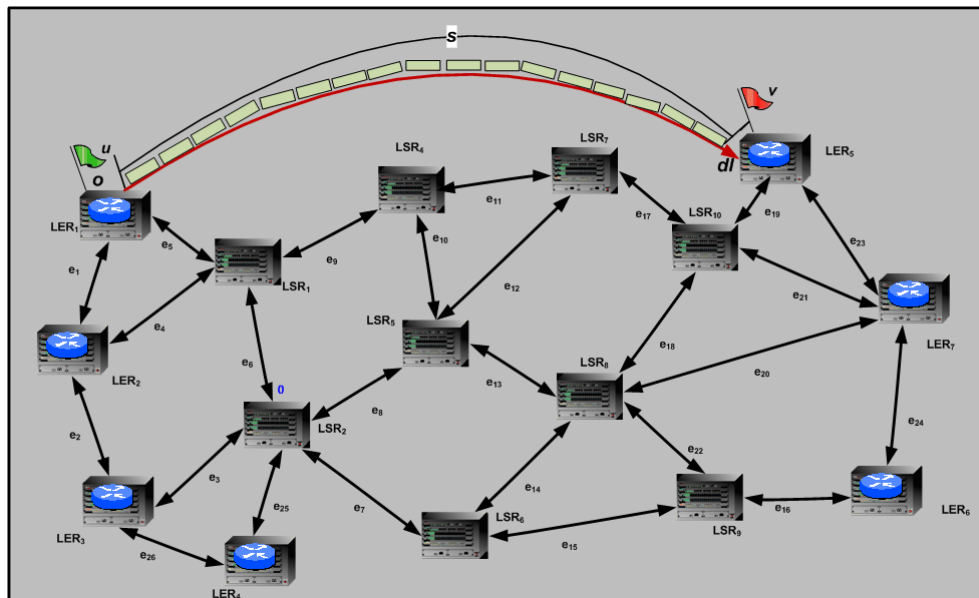


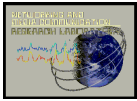
Fig.2: The Task t Elaboration over a MPLS Domain

V. The Route Scheduling Tier

This tier consists of the route scheduling solver. The main task of the route scheduling tier is computing time-scheduled routes in the underlying DCN@MPLS network domain corresponding to the client requests.

By referring to the route scheduling tier is illustrated in Fig.1. The inputs to this tier are from the client and the DCN@MPLS routing tiers. The upper tier provides the set of tasks (requests). The lower tier provides the network topology information through the node and link resource information. Both types of information further enable the route scheduling solver to construct a conceptual graph to the underlying MPLS domain. The outputs of this tier are the task schedule, route schedule and per-hop route schedule. Each is described throughout this section.

In this section, we first introduce the conception of route scheduling and next describe the functionality of the route scheduling solver.



A. Route Scheduling

Given a MPLS domain directed multi-graph $G = (N, E)$ whose model illustrated by Fig.1 Let T denote the set of n tasks $\{t_1, t_2, \dots, t_n\}$. Each task $t_i \in T$ is represents a data transmission request modeled in Section IV and further illustrated by Fig 4. Let the route (LSP) r_i be a solution to task t_i , defined as an ordered set of k node hops (switch routers) $H_i = \{u_i, n_{i,2}, \dots, n_{i,j}, \dots, n_{i,(k-1)}, v_i\}$, or as $k-1$ link (edge) hops $L_i = \{e_{i,1}, e_{i,2}, \dots, e_{i,j}, \dots, e_{i,k-1}\}$, where $e_{i,j}$ connects $n_{i,(j-1)}$ and $n_{i,j}$. The attributed description of the route instance r_i by Fig.3 shown below. Note that r_i denotes the label switched path for the LSP task t_i . Further, the set R defines a route schedule as a set of routes, where each task has a route (is committed to a task). Find The route schedule $R_T = \{r_1, r_2, \dots, r_i, \dots, r_n\}$

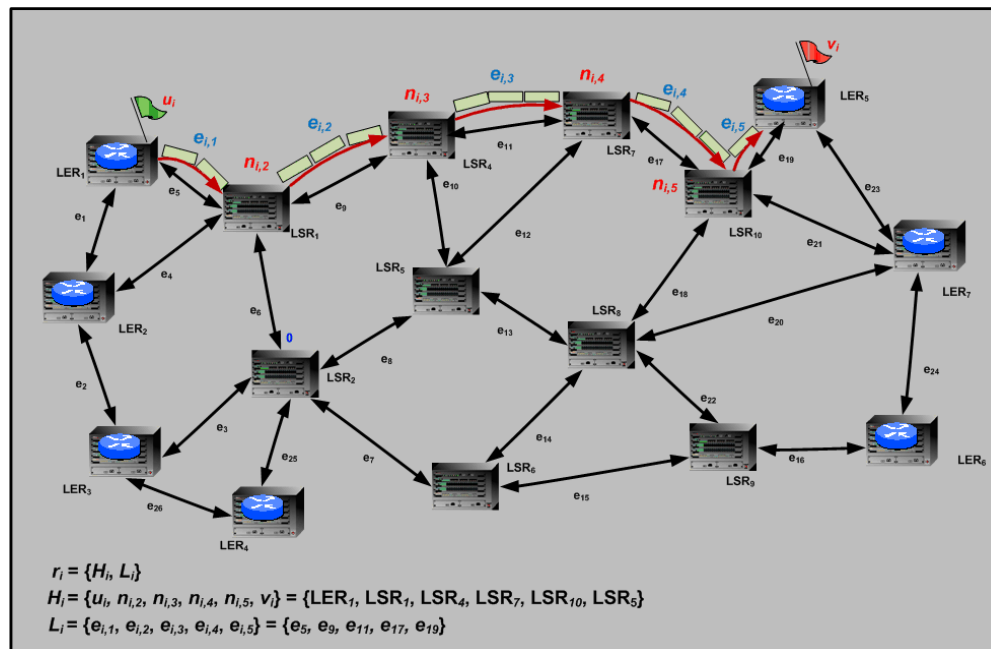


Fig.3: The attributed description of the route instance r_i

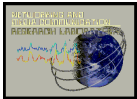
B. The Route Scheduling Solver

This solver aims to find the optimal LSP schedule maximizing the objective function. The inputs to this solver consists of logical DCN residual graph $G^{(i)}$. Note that $G^{(i)} = (N^{(i)}, E^{(i)})$, where $N^{(i)}$ represents the residual set of nodes representing the NRIB and $E^{(i)}$, represents the residual set of edges representing the LRIB. Moreover, the set of data transmission requests represented by the residual task set $T^{(i)}$.

VI. The DCN@MPLS Route Scheduling Tier

The DCN@MPLS scheduling is the central tier shown in Fig.1 implementing the actual DCN scheduling at the MPLS at the architectural and the protocol levels. We first describe the standard protocol elements and mechanisms provided by CR-LDP to setup LSPs. Afterwards, we show the CR-LDP extensions to support DCN by means enabling time-scheduled LSP setup.

This tier introduces three modules: the *Node Resource Information Base (NRIB)*, the *Link Resource Information Base (LRIB)* and the router server. The inputs of this tier originate from the route scheduling and the MPLS domain tiers.



As given by the router scheduling tier, the task describes a flow transfer request described by the task t_i described by the tuple $(u_i, v_i, o_i, dl_i, s_i)$, where u_i is the ingress LER, v_i is the egress LER, o_i is the transfer origination time (seconds), dl_i is the transfer completion time, s_i is the size of the flow in (bits). The corresponding solution to t_i is the route (Label Switched Path) r_i given by $\{\{n_{i,1}, n_{i,2}, \dots, n_{i,m}\}, \{e_{i,1}, e_{i,2}, \dots, e_{i,n}\}\}$, where $\{n_{i,1}, n_{i,2}, \dots, n_{i,m}\}$ is a set of m node hops and $\{e_{i,1}, e_{i,2}, \dots, e_{i,n}\}$ is the set of n link hops.

In addition, the per-hop route schedule describes u_{ij} the per-link transfer schedule of the task t_i via the LSP r_i . For each link hop hope e_{ij} in r_i connecting the node-hops pair $(n_{ij}, n_{i,j+1})$, t_i at $n_{i,k-1}$ is decomposed into a set of segments $\{x_{i,j,1}, x_{i,j,2}, \dots, x_{i,j,n}\}$ to be streamed via e_{ij} .

The transfer of data segment $x_{i,j,k}$ buffered at n_{ij} to be transferred to $n_{i,j+1}$ via e_{ij} is denoted by the *data unit transfer* $du_{i,j,k}$. An instance of the data unit transfer $du_{i,j,k}$ is defined by the tuple $(seq_{i,j,k}, sz_{i,j,k}, ps_{i,j,k}, pt_{i,j,k}, dep_{i,j,k}, arr_{i,j,k})$. Where $seq_{i,j,k}$ is The unit sequence number, $sz_{i,j,k}$ is the unit size in bits, $ps_{i,j,k}$ is the data unit processing start time, $pt_{i,j,k}$ is the data unit processing time duration at the transmitting node hop n_{ij} , $dep_{i,j,k}$ is the departure time from the node hop n_{ij} , and $arr_{i,j,k}$ is the arrival time to the node hop $n_{i,j+1}$. Furthermore, the set of segments $\{x_{i,j,1}, x_{i,j,2}, \dots, x_{i,j,n}\}$ to be transferred from n_{ij} to $n_{i,j+1}$ via e_{ij} is given by the *link-hop transfer schedule* $ts_{ij} = \{du_{i,j,1}, du_{i,j,2}, \dots, du_{i,j,n}\}$. Therefore, the per-hop route schedule u_{ii} is given by the set of all per-link hope transfers along the route r_i given by $\{ts_{i,1}, ts_{i,2}, \dots, ts_{i,n}\}$.

A. The Node Resource Information Base NRIB

The NRIB is a database server that stores and keeps track of the resources of each label switch router in the MPLS domain. Node resources information includes available service capacity (bps), total service capacity (bps), total input/output buffers capacity (bytes) and available input/output buffer capacities (bytes). For each node n , the NRIB holds two tables: one for the input buffers and other for the output buffers. The input buffer reservation table *in-table* holds a record for each data unit transfer incoming to n . On the other hand, *out-table* is the output reservation table that holds a record for each data unit transfer departing n .

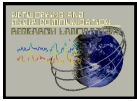
An input reservation record *in-rsv* is given by the tuple $(id, tid, nid, rbuf, beg)$. On the other hand, the output reservation record *out-rsv* $(id, tid, nid, rbuf, beg, end)$. For both record types, id is the resource reservation ID number, tid is the reserving task ID number, nid is the node hop ID, $rbuf$ is the reserved buffer, beg is the reservation beginning (start) time, and end is the reservation ending time. From the resource reservation table, node resource information can be derived and further pushed to the route scheduling tier. Note that *in-rsv* only holds the beginning time. This because when a data unit transfer $du_{i,j,k}$ from the node-hop n_{ij} to $n_{i,j+1}$ via the link hop e_{ij} , $x_{i,j,k}$ is first placed in the output buffer of n_{ij} prior departure and will be further placed in $n_{i,j+1}$ input buffer. Therefore, the input buffer is concerned with start of the reservation, which is the arrival of $x_{i,j,k}$ ($arr_{i,j,k}$), since the end of the reservation will be determined by $n_{i,j+1}$ when $ts_{i,j+1}$ is created.

NRIB acquires link resource information from the MPLS network domain. However, we assume this is performed through a data acquisition protocol, which is described in future. From the link resource reservation table, the LRIB computes the available link capacities at each given instance of time and further transmits them to the route scheduling tier.

B. The Link Resource Information Base LRIB

The LRIB is also a database server, which stores and keeps track of the resources of each link in the MPLS network domain. Link information includes source LSR, destination LSR, total link capacity (bps), and propagation delay (seconds). Similar to the NRIB, a reservation table is stored for each link in the MPLS domain. This table also holds a record for each for each data unit transfer.

A link reservation record *l-rsv* is given by the tuple $(id, tid, lid, src, dst, rbw, fbw, beg, end)$, where id is the resource reservation ID number, tid is the reserving task ID number, lid is the link hop ID, src is the link source node hop, dst is the link destination node hop, rbw is the reserved capacity, fbw is the available (free) capacity, beg is the reservation beginning (start) time, and end is the reservation ending time.

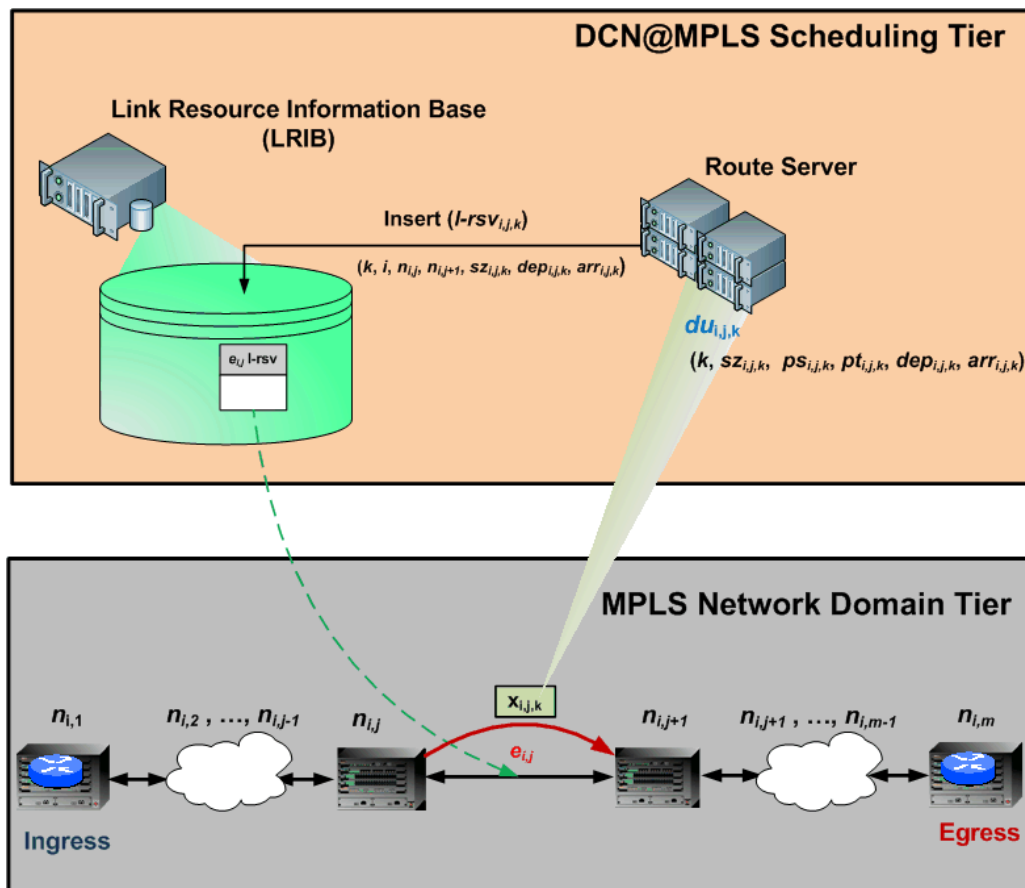


LRIB acquires link resource information from the MPLS network domain. However, we assume this is performed by a data acquisition protocol, which is described in future. Moreover, from the link resource reservation table, the LRIB computes the available link capacities at each given instance of time and further transmits them to the route scheduling tier.

C. The Route Server

The route server is a special-purpose application server responsible of disseminating the per-hop route schedule u_{ii} into the LSR belonging to the LSP r_i . As described in the architectural overview, the route server acquires the task schedule T_r , route schedule R_T and the per-hop route schedule U_{Tr} from the route scheduling tier. For each triplet (t_i, r_i, u_{ii}) , where t_i in T_r , r_i in R_T and u_{ii} in U_{Tr} , the route server performs two tasks: resource reservation and LSP time-schedule dissemination. The latter operation represents the DCN information dissemination to the reserved LSP. To clearly describe the functionality of the route server, we devise a LSP scenario shown in the figure below.

The resource reservation task is elaborated throughout this section. For each data unit transfer $du_{i,j,k}$ in the set $st_{i,j}$ (in u_{ii}) representing t_i transfer from the node-hop $n_{i,j}$ to $n_{i,j+1}$ via $e_{i,j}$ three records are created, one link resource reservation and two node resource reservations. The link reservation $l-rsv_{i,j,k}$ corresponding to $du_{i,j,k}$ is given by $(k, i, n_{i,j}, n_{i,j+1}, sz_{i,j,k}, dep_{i,j,k}, arr_{i,j,k})$. The field k is the reservation id number, i is the task id number, $n_{i,j}$ is the source node-hop, $n_{i,j+1}$ is the destination node-hop, $sz_{i,j,k}$ is the size of the segment $(x_{i,j,k})$, $dep_{i,j,k}$ is the start of the reservation and $arr_{i,j,k}$ is the end of the reservation. Note that the departure of the segment denotes the start of reservation, while its arrival denotes the end of that reservation. Next, the record $l-rsv_{i,j,k}$ is inserted into LRIB, specifically into the reservation table of the link $e_{i,j}$. The link resource reservation task is illustrated in Fig.7.



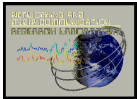


Fig.4: The Link Resource Reservation

In addition for the same data unit transfer $du_{i,j,k}$, two reservation records are created one for the output buffer of the node $n_{i,j}$ and another for the input buffer $n_{i,j+1}$. The output reservation record $out-rsv_{i,j,k}$ is given by the tuple $(k, i, n_{i,j}, sz_{i,j,k}, (ps_{i,j,k} + pt_{i,j,k}), dep_{i,j,k})$. Moreover, the input record This record is denoted by $in-rsv_{i,j+1,k}$ is given by the tuple $(k, i, n_{i,j+1}, sz_{i,j,k}, arr_{i,j,k})$. Afterwards both $out-rsv_{i,j,k}$ and $in-rsv_{i,j+1,k}$ are inserted in their corresponding reservation tables in the NRIB. The node resource reservation is illustrated in Fig.8

The task of disseminating the LSP time schedule involves three operations: acquiring the set of labels mappings La_i , extracting the timing information from the route schedule u_i and distributing the timing information to each LSR in r_i . For better understanding of these operations, we utilize the following LSP scenario shown in the Fig.9.

The reference scenario consists of two architectural elements the route server and a LSP given $\{\{LER_1, LER_2, LSR_1, LSR_4, LSR_5, LSR_8, LSR_{10}, LER_5\}, \{e_1, e_4, e_9, e_{10}, e_{13}, e_{18}, e_{19}\}\}$. It has to be noted that the route server belongs to the DCN@MPLS route scheduling tier, while the LSP belongs to the MPLS network domain tier.

The task t_i represents an instance of FEC (data flow transmission request) from the ingress LER_1 to the egress LER_5 starting from the time $\omega = 1$ and ending at $\omega = 40$ and the size of data to be transmitted is 1.5 MB. The LSP r_i committed to t_i is $\{\{LER_1, LER_2, LSR_1, LSR_4, LSR_5, LSR_8, LSR_{10}, LER_5\}, \{e_1, e_4, e_9, e_{10}, e_{13}, e_{18}, e_{19}\}\}$.

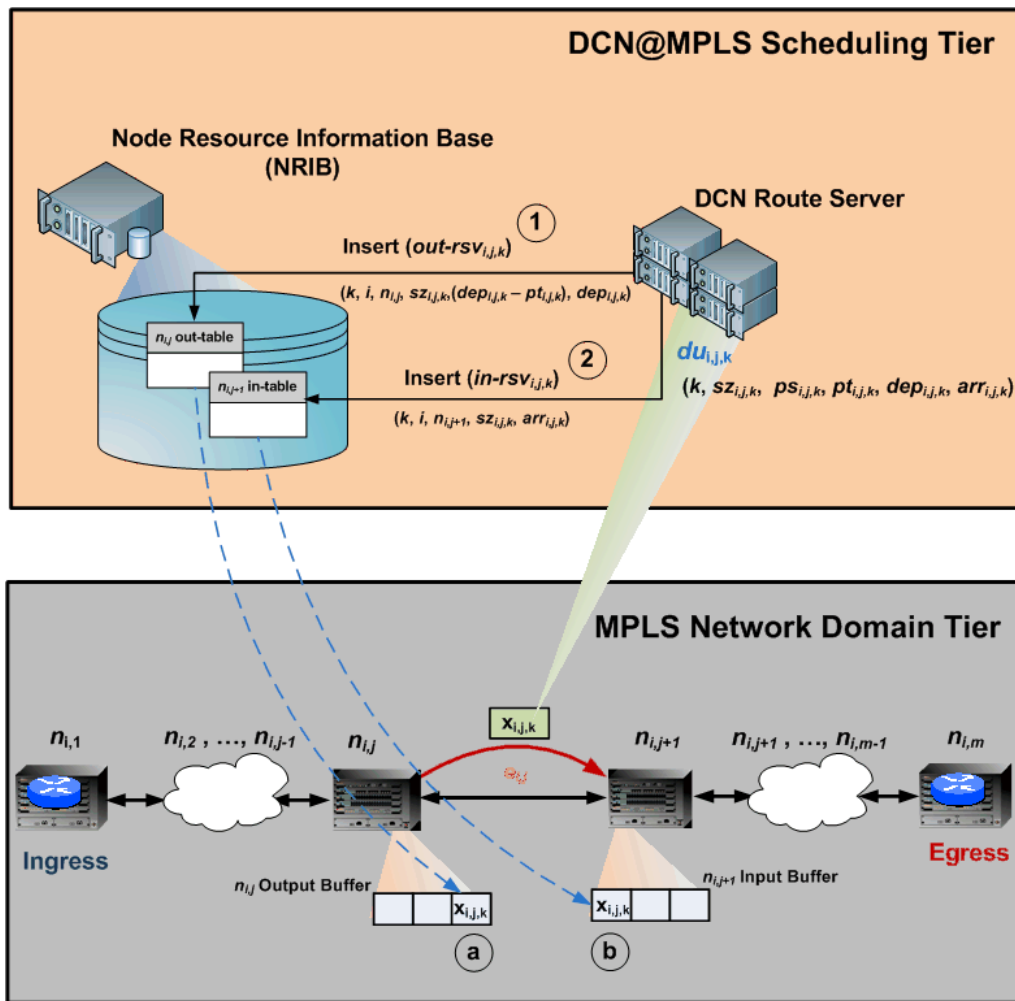
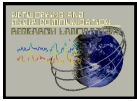


Fig.5: The Node Resource Reservation

Acquiring the label mapping information involves the invocation of the label/request mapping signaling of CR-LDP illustrated in Fig.10. The outcome of this step is the set La_i denotes the set of input/output label pairs at each node hop $n_{i,j}$ in r_i given as $\{(li_{i,1}, lo_{i,1}), (li_{i,2}, lo_{i,2}), \dots, (li_{i,k}, lo_{i,k}), \dots, (li_{i,m}, lo_{i,m})\}$. Note that $li_{i,k}$ is the k^{th} input label and $lo_{i,k}$ is the output label of the FEC t_i passing traversing through the LSR $n_{i,k}$.

The route schedule time information is denoted by the estimated data flow starting and ending times pair $(srt_{i,k}, end_{i,k})$ at each node hop $n_{i,k}$ in r_i . The starting $srt_{i,k}$ time means the arrival of the first data segment to the node hop $n_{i,k}$ mapped to the k^{th} label input/output label pair $(li_{i,k}, lo_{i,k})$ given by $arr_{i,k,1}$, while the ending time $end_{i,k}$ means the departure of the last (m^{th}) data segment for that node hop given by $dep_{i,k,m}$.

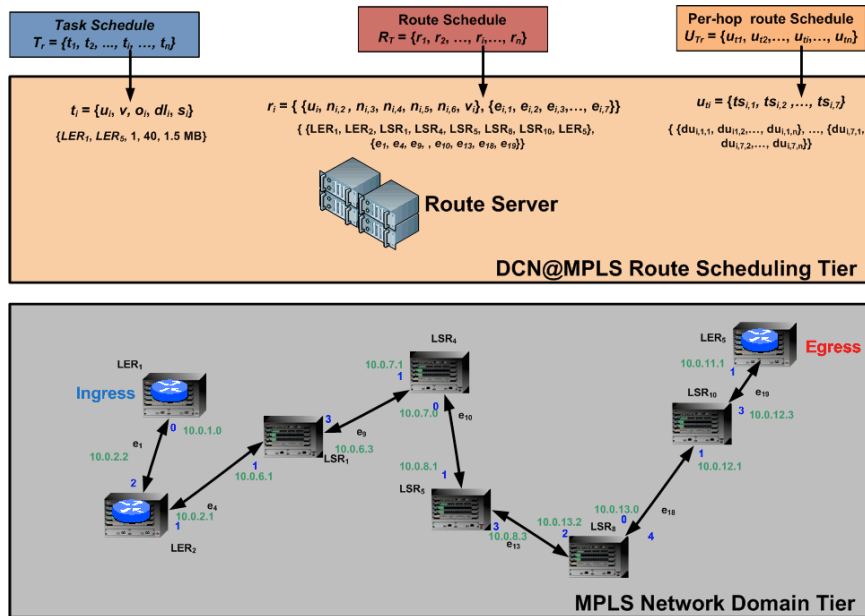
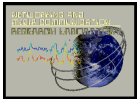


Fig.6: The LSP reference scenario

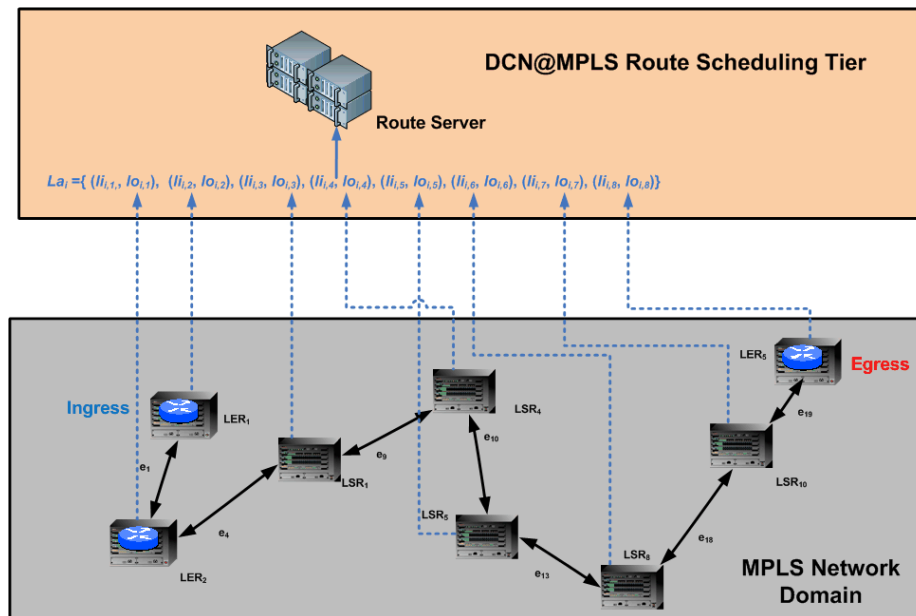
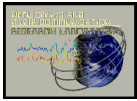


Fig.7: LSP Label Acquisition

The label timing pair determines its lifetime inside the FIB, hence the input/output label pair $(li_{i,k}, lo_{i,k})$ is only valid during the time period $[srt_{i,k}, end_{i,k}]$. The outcome of this operation is the set $\Omega_i = \{(srt_{i,1}, end_{i,1}), \dots, (srt_{i,j}, end_{i,j}), \dots, (srt_{i,m}, end_{i,m})\}$.

The task of distributing the set Ω_i to corresponding the LSRs in r_i illustrated in Fig. 11 involves three signaling operations: label inquiry, label response and label timing that elaborated later in this



section. For this operation we describe two signaling models: centralized and distributed. Both methods are elaborated in the protocol CR-LDP protocol extensions section.

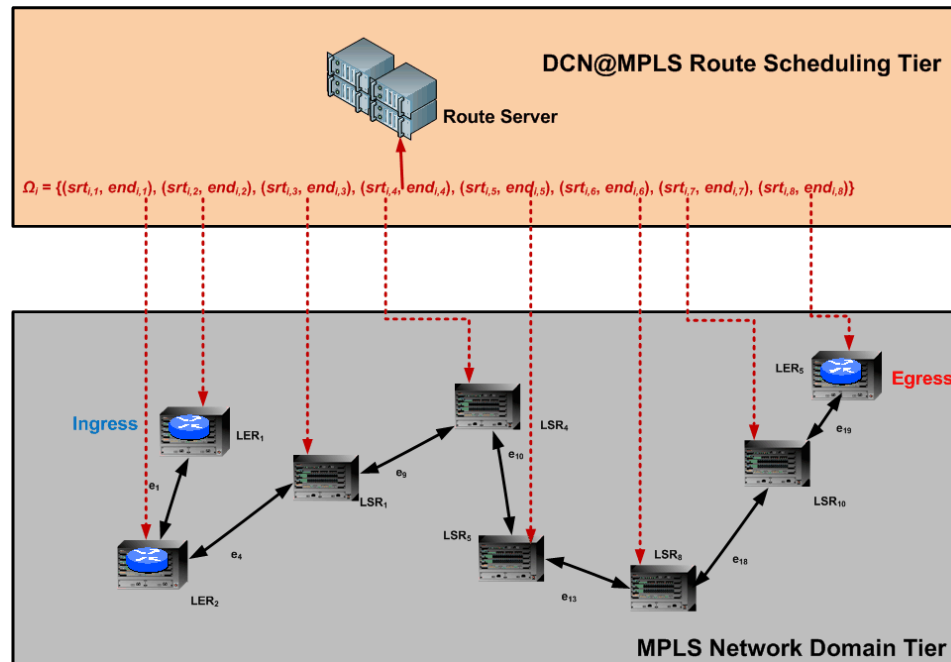


Fig.8: Label Timing Dissemination

VII. MPLS CR-LDP Extensions for Route Scheduling

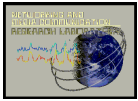
The DCN@MPLS tier presents the physical DCN abstraction tier for MPLS network domains. It is shown that the route server is the core module implementing the DCN functionality at the MPLS protocol layer. Furthermore, it was established that the DCN@MPLS realization the per-hop route schedule produced by the route scheduling tier is scheduled label timings. In addition, it was also given that the route server is mainly responsible of disseminating route schedules to corresponding LSRs in the MPLS domain.

According to the MPLS architectural specification, DCN@MPLS is considered a realization of constrained routing paradigm, where routes (LSPs) are constrained by the data flow QoS demands. Based on the architectural model presented, routes (LSPs) computed by the route scheduling tier are assumed to satisfy the on-demand data request QoS demands. In other words, for task t_i representing a FEC assigned to a LSP r_i , the dl_i attribute determines the completion of the transmission and the value $(s_i / (dl_i - o_i))$ represents the demanded bandwidth.

As a result, route schedule distribution mechanically follows the operation of the CR-LDP described below. As mentioned earlier, this mode is based on the standard MPLS CR-LDP, where no protocol extensions are required. Never the less, the route server should additionally define a data structure and signaling procedure.

CR-LDP protocol enables explicit LSP setup through its label distribution mechanisms. As given in architectural definition of MPLS network domain tier, an LSP is explicit sequence of LSRs connecting ingress LER to an egress LER. Form the architectural perspective, the operation of CR-LDP is only concerned with the organization of label witched paths. On the other hand, CR-LDP label distribution involves two operations: label request and label mapping.

In this section, we present the route scheduling distribution task performed the route sever. We describe two types of route schedule distribution models: centralized and distributed. The centralized



model is based on the standard label distribution primitives supported by MPLS CR-LDP. On the other hand, the distributed extends the MPLS CR-LDP with three protocol signaling procedures to enable route schedule distribution.

A. Centralized DCN@MPLS Route Schedule Distribution

The centralized route scheduling distribution performed by the route server leverages the pre-existing label distribution mechanisms supported by CR-LDP. This model first determines the architectural specifications of the route server and label switch routers in the MPLS network domain. Afterward it describes the CR-LDP protocol signaling procedures involved.

i. Architectural Specifications of Route Server

The route server located in the DCN@MPLS tier is only concerned with two inputs from the route scheduling tier: The route schedule R_T and the task schedule T_r . The route server defines a data structure called *global route schedule* described as a table. For each pair (t_i, r_i) in T_r and R_T , This table stores a record, which determines the initiation time for the LSP represented by r_i . A route schedule record is defined by the tuple (i, o_i, H_i) , where i is the record ID number, o_i is the origination time of t_i and $H_i = \{u_i, n_{i,2}, \dots, n_{i,m-1}, v_i\}$ is the set of node-hops of r_i . The global schedule data structure is elaborated in the figure shown below.

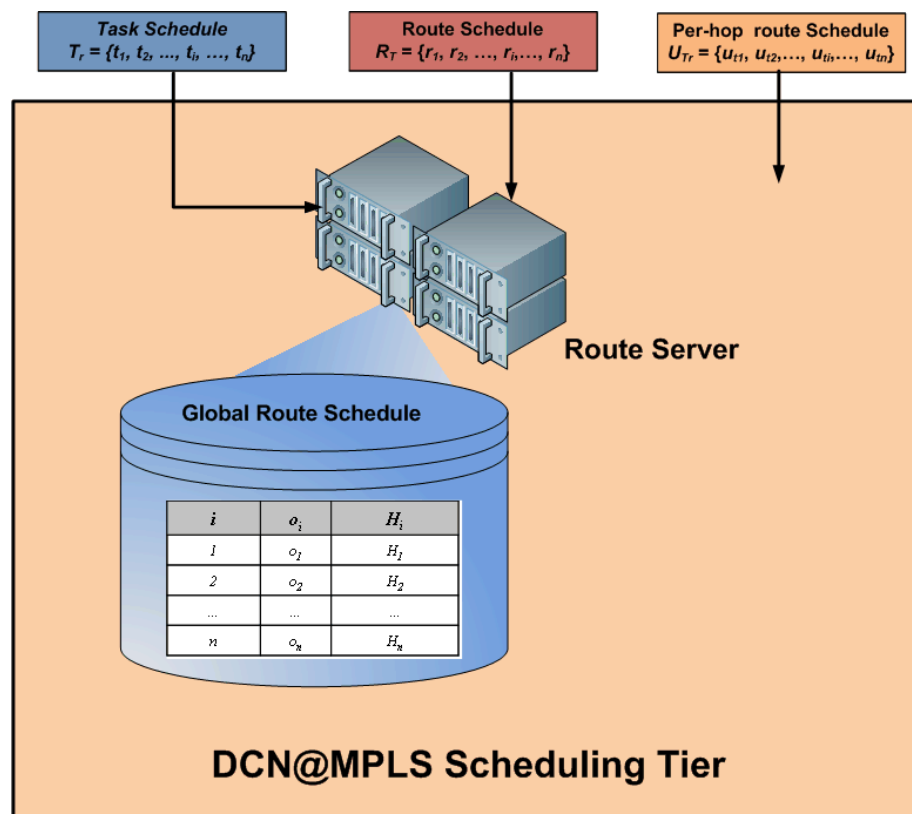
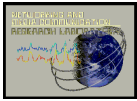


Fig.9: The Route Server Global Route Schedule

ii. Architectural Specifications of Label Switch Router



Each LSR in the MPLS network domain consists of two: information bases: *Label Information Base (LIB)* and *Forward Information Base (FIB)*. The overall organization of the LSR is illustrated in Fig. 10. The LIB is modeled according to per-interface where each network interface is allocated a label space range. For instance, each LRS could consider 256 labels equally divided over its interfaces. When an FEC mapping request is received, the interface number is passed to LIB, where a label value is selected from its corresponding range. Besides the LIB, the FIB is table that holds the next hop forward mapping of an incoming label. For each FEC, the FIB maintains a forward record given the tuple (*LSPID*, *FEC*, *IN-IF*, *IN-LBL*, *OUT-IF*, *OUT-LBL*, *NEXT*). The attributes are described as follows; *LSPID* is local LSP id number, *FEC* is forward equivalence class equal to the IPv4 address prefix, *IN-IF*, is the input id number, *IN-LBL* is input label value, *OUT-IF* is the output interface, *OUT-LBL* is the output label value, *NEXT* is the next hop IPv4 address.

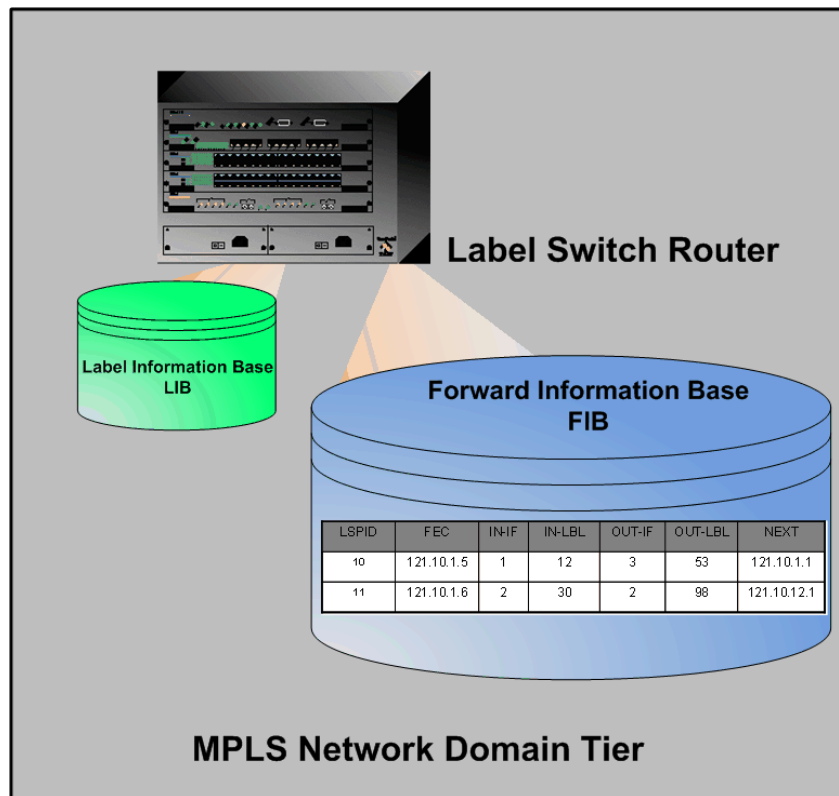
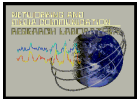


Fig.10: The Label Switch Router Data Organization

iii. Centralized Route Scheduling Protocol Signaling

Periodically, the route server scans the global route schedule and initiates each route LSP according to its initiation time. It is assumed that the route server timer is given by ω , for route scheduling record rec_i , when $\omega = o_i - \Delta$ the route server initiates the CR-LDP distribution signaling. Note that Δ denotes the LSP label distribution and LSP setup latency in seconds. The CR-LDP label distribution is performed by two protocol signaling operations: label request and labels mapping. For each operation, CR-LDP defines a Time Length Value TLV message and also describes signaling steps performed throughout the operation.

CR-LDP defines two label distribution messages initiated by the ingress LER: label request and label mapping messages. Both messages TLV headers are described in [4]. In this section we



describe both operations starting with the label request signaling. We utilize the LSP reference scenario given by Fig.6.

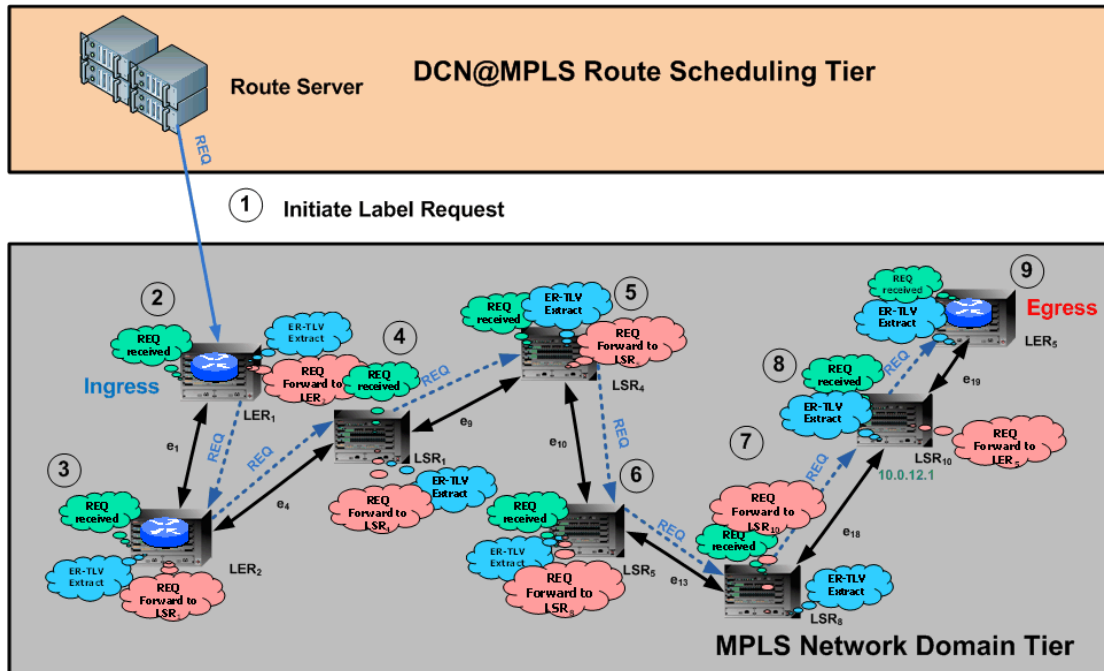


Fig.11: The label request messaging

Note that the route server initiates the operation from the ingress LER. The label request is forwarded in a hop-by-hop fashion until it arrives to the egress LER.

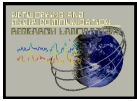
Fig.11 shown above illustrates the label request initiated by the ingress LER (LER₁). Note that LER₁ has already been aware of the entire path to the egress LER (LER₅). Hence, LER₁ creates the CR-LDP-REQ message shown in Fig.15, where the explicit route consists of ordered hops LER₁ (highlighted in yellow), LER₂, LSR₁, LSR₄, LSR₅, LSR₈, LSR₁₀ and LER₅.

In step-1, the ingress (LER₁) builds the request message, pops its hop information from the explicit route TLV and passes it to the next hop LER₂. In step-2, LER₂ receives the message, pops itself from the explicit route TLV. Similar to step-2, steps 3 to 7 perform the same operations. In step-8, the egress LER₅ receives the message and initiates the label mapping process described in the proceeding discussion.

Once the egress LER receives the label request message; it initiates the label mapping process performed in a hop-by-hop fashion. Label mapping involves three steps at each hop in the LSP starting at the egress and ending at the ingress LERs. First, the LIB is inquired an available label value to be mapped to FEC enclosed in the request message. Second, the label value obtained from the LIB is mapped to the FEC and a new entry is inserted inside the FIB, determining the output label value. Third, the label mapping message LDP-LABEL-MAP-MSG-TLV is sent to the next hop towards the ingress LER. For the label request scenario described above, we elaborate the label mapping process using Fig.9.

In step-1, LER₅ generates 127 as label value for the incoming traffic, whose LSPID is 10. LER₅ inserts a new entry in the FIB corresponding to that traffic. As shown the input label is 127 and the output label is N/A because LER₅ is the egress. Next, LER₅ generates label mapping message containing 127 as the input label value and passes to LSR₁₀.

In step-2, LSR₁₀ receives the label mapping message from LER₅ and generates label value for that traffic equal to 189. LSR₁₀ inserts a new entry in its local FIB, whose input label is 189 and



output label is 127. After entry is inserted, LSR₁₀ passes its input label value to LSR₈ through a label mapping message.

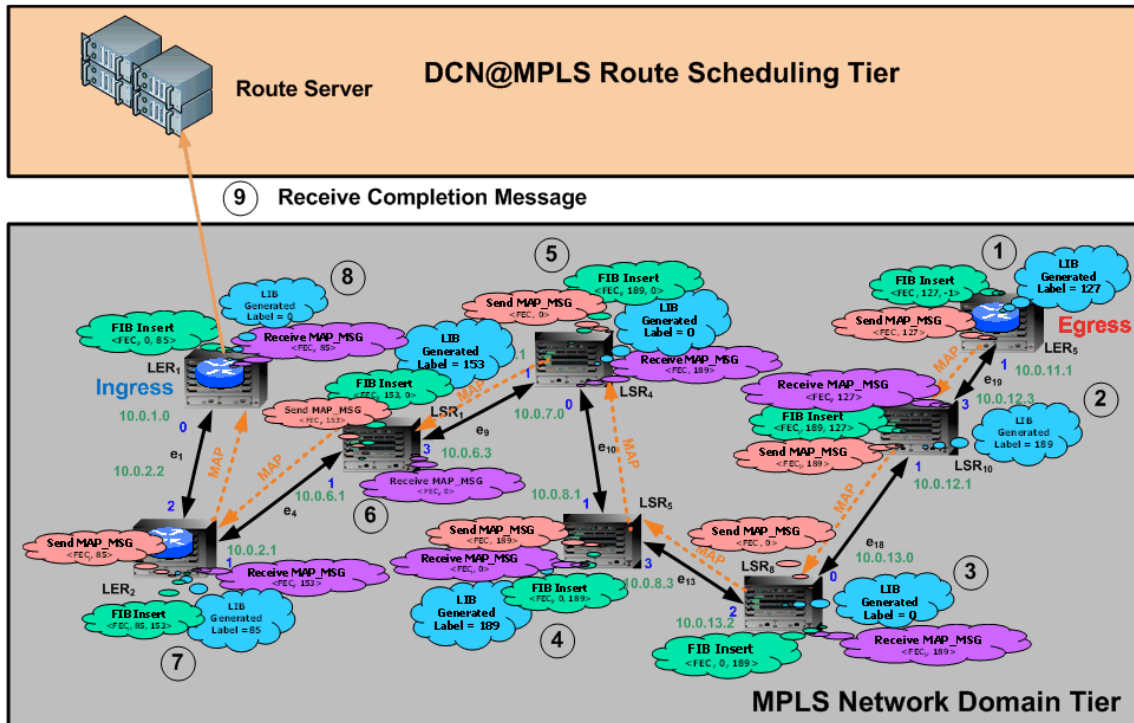


Fig.12: The Label Messaging

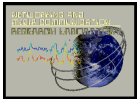
In step-3, LSR₈ receives the label mapping message from LSR₁₀ and generates label value for that traffic equal to 0. LSR₈ inserts a new entry in its local FIB, whose input label is 0 and output label is 189. After entry is inserted, LSR₈ passes its input label value to LSR₅ through a label mapping message.

In step-4, LSR₅ receives the label mapping message from LSR₈ and generates label value for that traffic equal to 189. LSR₅ inserts a new entry in its local FIB, whose input label is 189 and output label is 0. After entry is inserted, LSR₅ passes its input label value to LSR₄ through a label mapping message.

In step-5, LSR₄ receives the label mapping message from LSR₅ and generates label value for that traffic equal to 0. LSR₄ inserts a new entry in its local FIB, whose input label is 0 and output label is 189. After entry is inserted, LSR₄ passes its input label value to LSR₁ through a label mapping message.

In step-6, LSR₁ receives the label mapping message from LSR₄ and generates label value for that traffic equal to 153. LSR₁ inserts a new entry in its local FIB, whose input label is 153 and output label is 0. After entry is inserted, LSR₁ passes its input label value to LER₂ through a label mapping message.

In step-7, LER₂ receives the label mapping message from LSR₁ and generates label value for that traffic equal to 85. LER₂ inserts a new entry in its local FIB, whose input label is 85 and output label is 153. After entry is inserted, LER₂ passes its input label value to LER₁ through a label mapping message.



In step-8, LER1 receives the label mapping message from LER2 and generates label value for that traffic equal to 0. LER2 inserts a new entry in its local FIB, whose input label is 0 and output label is 185.

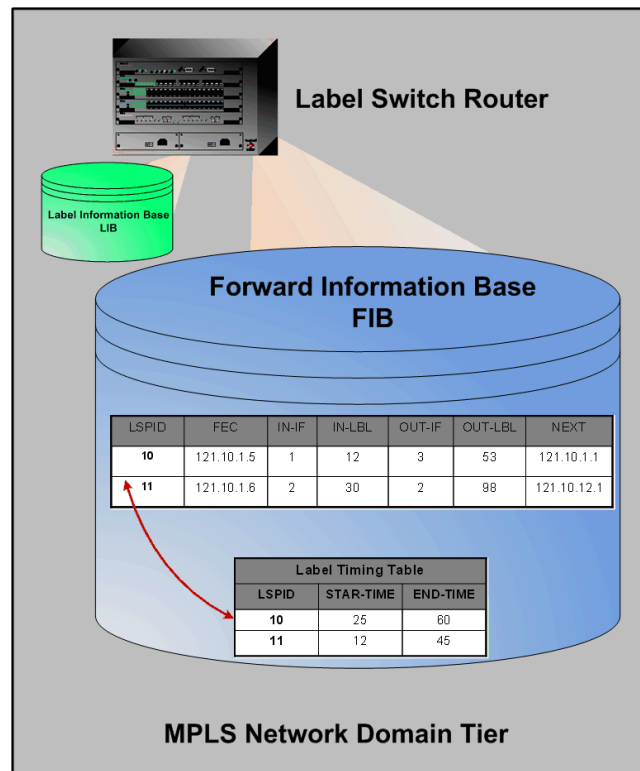
B. Distributed DCN@MPLS Route Schedule Distribution

The distributed model of route scheduling distribution is based on disseminating the label timing pairs to each LSR in the LSP. In this model, the route server does not define or utilize any special data structure. On the other hand, this model augments the LSR forward information base (FIB) data structure and further defines three protocol signaling operations.

In this section, we first describe the augmented data organization of the FIB. Second we present the CR-LDP protocol extensions corresponding to three signaling operations. This is due to the fact that CR-LDP does not enable time-scheduled label distribution. Never the less, CR-LDP allows protocol extensions through optional messaging that allows experimental operation. In this section, we describe three types of protocol extensions: data structure, signaling messages, and signaling operations

i. The Architectural Specifications of Label Switch Router

This model defines an additional table associated with the original forward information base. This table holds the label timing pair for each input/output label-pair in the FIB, namely *Label Timing Table (LTT)* illustrated in Fig. 13. Each record in the LTT is defined by the tuple (*lspid*, *start-time*, *end-time*), where *lspid* is the LSP id number, *start-time* is the beginning time of FEC reception denoted by the *lspid*, and *end-time* is the ending time of that FEC reception.



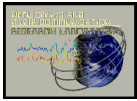


Fig.13: The FIB Architectural Specification

When a label is received by an LSR, the local FIB is interrogated to determine appropriate action to be taken such as label swap, push or pop. The FIB further determines the validity of the input/output label-pair corresponding to label received. If the local time at the LSR is between [start-time, end-time], then a label action is taken, and dropped otherwise. Next we present the CR-LDP protocol extensions.

ii. The Extended CR-LDP Label Distribution Signaling Messages

The signaling messages proposed are experimental messages allocated by the CR-LDP. We present three experimental signaling messages to enable disseminate time-scheduled LSP information to be disseminated to the MPLS domain.

First, the label inquiry message defined as CR-LDP-EXP-LABL-INQ. This message is initiated by the ingress LER to obtain the sequence of labels being pushed, swapped and popped a specific LSP. The type length value specification of CR-LDP-EXP-LABL-INQ is given by Fig.14. It can be noted that TLV above is based id depicted from the explicit route TLV described in [4]. This message consists of the following field: id, FEC TLV, LSPID TLV and ER TLV.

Second, the label response message defined as CR-LDP-EXP-LABL-RESP initiated by the egress LER as response the inquiry message. This message is forward from the egress to the ingress LER in a hop-by-hop fashion. Third, the purpose of the timing message is to distribute the FEC_c label timing information to the node hops along the LSP.

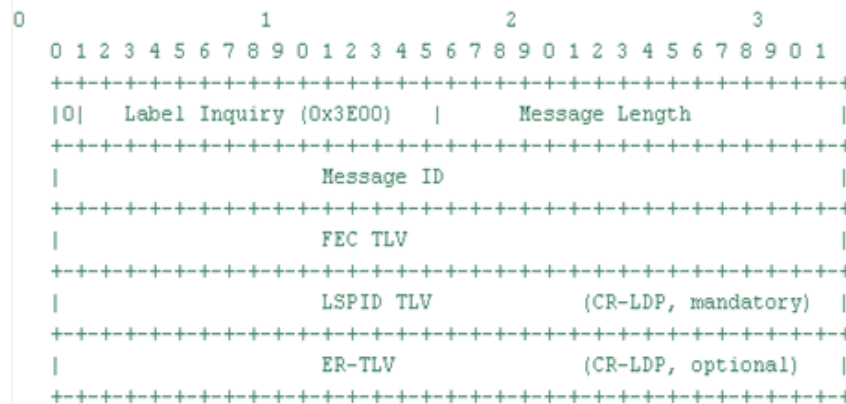


Fig.14 CR-LDP-EXP-LABL-INQ TLV

Each node in the LSP appends (pushes) the corresponding input and output labels for that given FEC.



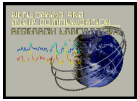


Fig.15: CR-LDP-EXP-LABL-RESP TLV

At completion of the label inquiry/response operations described earlier, the ingress precisely estimate the flow (the task t_c) arrival and departure times at each hop (LSRs and LERs) along the LSP (the solution r_c). Therefore, the ingress incorporates the label stack with the route schedule u_{t_c} to determine t_c arrival and departure pair for each hop. In addition, the label timing pairs are distributed to their corresponding hops using the experimental message CR-LDP-EXP-TIMING.

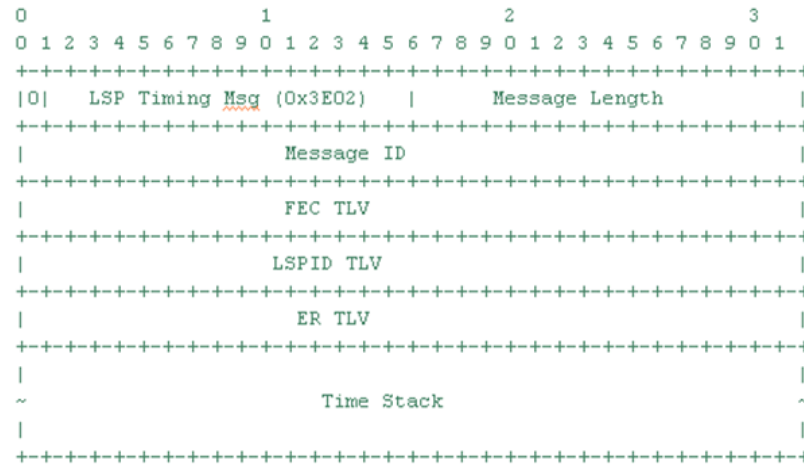


Fig.16: CR-LDP-EXP-TIMING TLV

iii. The Extended CR-LDP Label Distribution Signaling Operations

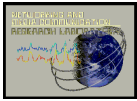
The overall process of distributing time-scheduled LSP information to the MPLS domain is performed by five operations: label request, label mapping, label inquiry, label response and label timing.

We consider a task t_c is as a data flow representing FEC_c from an ingress LER (u_c) to an egress LER (v_c) and the solution r_c (LSP) as solution to t_c . Moreover, consider u_{t_c} is the per-hop schedule of t_c via r_c specifying the arrival and departure of each segment (packet) in t_c at each hop along r_c . According to the context of MPLS, u_{t_c} has to be disseminated to all node hops (LERs and LSRs) along r_c in order to determine the life time of the label values generated for FEC_c stored at each node hop. In this section we describe the label inquiry, label response and label timing signaling operations as protocol extensions to CR-LDP label distribution.

First, the purpose of the label inquiry operation to obtain the sequence of input/output label at each hop along the LSP. This process is illustrated in Fig.17. It is shown that the label inquiry operation initiated by the ingress LER (LER_1). The ingress creates the label inquiry message, where the explicit route consists of ordered hops LER_1 (highlighted in yellow), LER_2 , LSR_1 , LSR_4 , LSR_5 , LSR_8 , LSR_{10} and LER_5 .

In step-1, the ingress (LER_1) builds the request message, pops its hop information from the explicit route TLV and passes it to the next hop LER_2 . In step-2, LER_2 receives the message, pops itself from the explicit route TLV. Similar to step-2, steps 3 to 7 perform the same operations. In step-8, the egress LER_5 receives the message and initiates the label mapping process described in the preceding discussion.

Second, the label response takes place once the ingress receives the label request message. The purpose of this operation is to forward the list of each label input/output pair in each hop along a given LSP. The label response message is initiated by the egress and is propagated towards the ingress in hop-by-hop manner.



The label response of the label inquiry scenario described previously is elaborated in Fig.18. Label response involves three steps at each hop in the LSP starting at the egress and ending at the ingress LERs. The LSR locks up the FIB for the corresponding input and output labels for the inquired FEC. Label values obtained from the FIB are appended to the label response message. Note that egress LSR creates the message and rest of the hops along LSP appends the FIB label values until it reaches to the ingress LSR. The label response message is forwarded to the next hop.

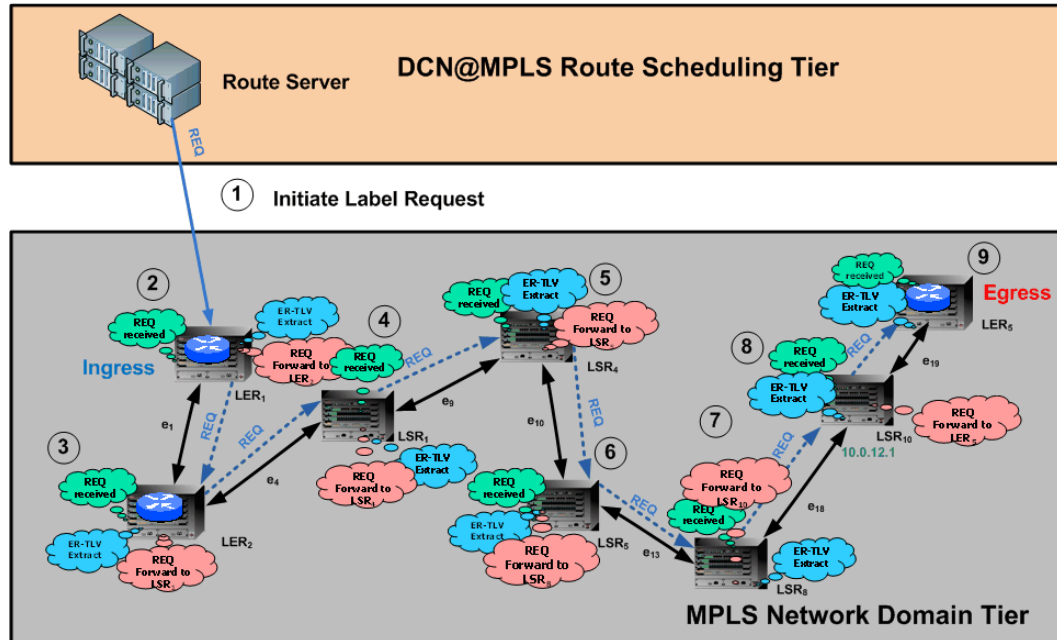
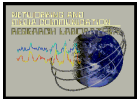


Fig.17: The Label Inquiry Messaging Operation

In step-1, LER₅ locks up the input/output pair <127, -1> from its local FIB and creates a label response message. Due to the fact it is the egress node, there is no output label value; hence -1 is given as null value. Next, LER₅ pushes the pair into the label stack of the response message and forwards it to LSR₁₀. In step-2, LSR₁₀ receives the response message, locks up the input/output <189, 127> pair from its local FIB. It pushes the pair into the message label stack. Afterwards, LSR₁₀ forwards the response message to LSR₈. In step-3, LSR₈ receives the response message from LSR₁₀, locks up the input/output <0, 189> pair from its local FIB. It pushes the pair into the message label stack. Afterwards, LSR₈ forwards the response message to LSR₅.

In step-4, LSR₅ receives the response message from LSR₈, locks up the input/output <189, 0> pair from its local FIB. It pushes the pair into the message label stack. Afterwards, LSR₅ forwards the response message to LSR₄. In step-5, LSR₄ receives the response message from LSR₅, locks up the input/output <0, 189> pair from its local FIB. It pushes the pair into the message label stack. Afterwards, LSR₄ forwards the response message to LSR₁. In step-6, LSR₁ receives the response message from LSR₄, locks up the input/output <153, 0> pair from its local FIB. It pushes the pair into the message label stack. Afterwards, LSR₁ forwards the response message to LER₂. In step-7, LER₂ receives the response message from LSR₁, locks up the input/output <85, 153> pair from its local FIB. It pushes the pair into the message label stack. Afterwards, LER₂ forwards the response message to LER₁. In step-8, LER₁ receives the response message from LER₂, locks up the input/output <0, 85> pair from its local FIB. It pushes the pair into the message label stack. Once



the stack of all labels is obtained the ingress node is capable of distributing the temporal information to each node hop along the LSP.

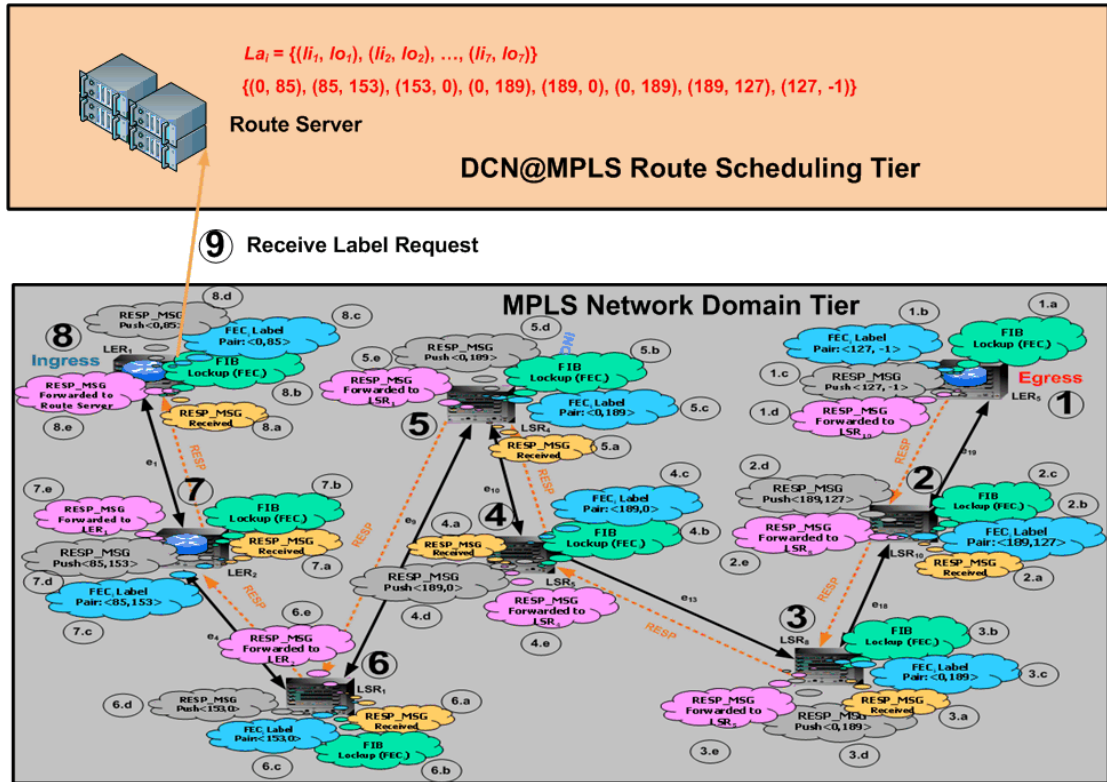


Fig.18: The Label Response Messaging Operation

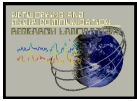
Third, the label timing takes a place once the route server receives the label sequence La_i . The route server builds the label timing schedule Ω , which holds the label starting and ending time pairs for a data transfer request representing a FEC.

By referring back to the label inquiry/response scenarios, the ingress LER incorporates the label stack with the route schedule u_{ic} computed for the t_c via r_c . Assume that u_{ic} schedule from the ingress to the egress nodes is given as follows $\{<1, 2>, <5, 6>, <9, 10>, <14, 15>, <20, 21>, <25, 26>, <31, 32>, <35, 36>\}$.

The label timing update process scenario is elaborated in Fig.15. Note that we only elaborate label stack field. At each hop starting from the ingress, the local FIB is updated with the task arrival and departure field. Next, the label timing message is forwarded to the next hop towards the egress node after two entries are extracted. The first is the hop from the ER field and second is the corresponding timing entries from the label stack.

In step-1, the ingress node builds the label timing message containing the label stack and the ER field containing the complete path from LER₁ to LER₅. LER₁ extracts its corresponding hop from the ER hop and extracts the pair $<1, 2>$ from the label stack. The corresponding entry to (LSPID = 10) in the FIB is updated with $<ARR-TIME = 1, DEP-TIME = 2>$. Next, LER₁ forwards the label timing message to LER₂.

In step-2, the LER₂ receives the timing message from LER₁ and extracts its corresponding hop from the ER hop and extracts the pair $<5, 6>$ from the label stack. The corresponding entry to



(LSPID = 10) in the FIB is updated with $\langle \text{ARR-TIME} = 5, \text{DEP-TIME} = 6 \rangle$. Next, LER_2 forwards the label timing message to LSR_1 .

In step-3, the LSR_1 receives the timing message from LER_2 and extracts its corresponding hop from the ER hop and extracts the pair $\langle 9, 10 \rangle$ from the label stack. The corresponding entry to (LSPID = 10) in the FIB is updated with $\langle \text{ARR-TIME} = 9, \text{DEP-TIME} = 10 \rangle$. Next, LSR_1 forwards the label timing message to LSR_4 .

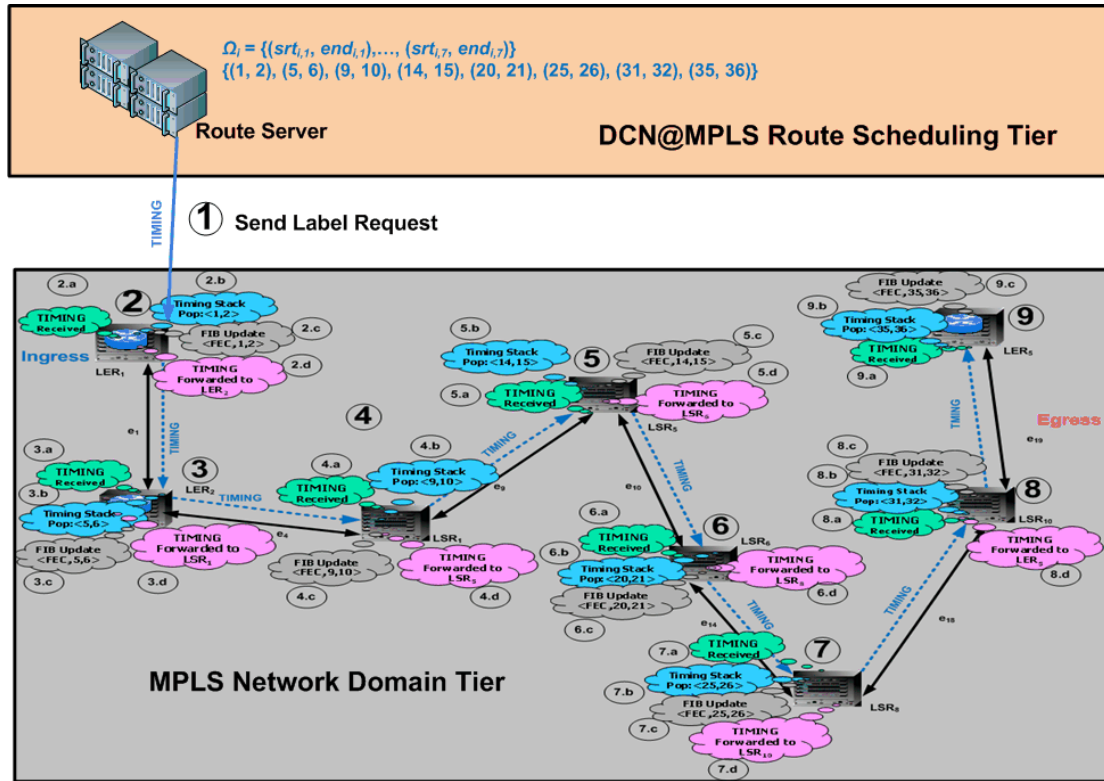


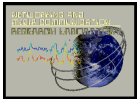
Fig.19: The Label Timing Messaging

In step-4, the LSR_4 receives the timing message from LSR_1 and extracts its corresponding hop from the ER hop and extracts the pair $\langle 14, 15 \rangle$ from the label stack. The corresponding entry to (LSPID = 10) in the FIB is updated with $\langle \text{ARR-TIME} = 14, \text{DEP-TIME} = 15 \rangle$. Next, LSR_4 forwards the label timing message to LSR_5 .

In step-5, the LSR_5 receives the timing message from LSR_4 and extracts its corresponding hop from the ER hop and extracts the pair $\langle 20, 21 \rangle$ from the label stack. The corresponding entry to (LSPID = 10) in the FIB is updated with $\langle \text{ARR-TIME} = 20, \text{DEP-TIME} = 21 \rangle$. Next, LSR_5 forwards the label timing message to LSR_8 .

In step-6, the LSR_8 receives the timing message from LSR_5 and extracts its corresponding hop from the ER hop and extracts the pair $\langle 25, 26 \rangle$ from the label stack. The corresponding entry to (LSPID = 10) in the FIB is updated with $\langle \text{ARR-TIME} = 25, \text{DEP-TIME} = 26 \rangle$. Next, LSR_8 forwards the label timing message to LSR_{10} .

In step-7, LSR_{10} receives the timing message from LSR_8 and extracts its corresponding hop from the ER hop and extracts the pair $\langle 31, 32 \rangle$ from the label stack. The corresponding entry to (LSPID = 10) in the FIB is updated with $\langle \text{ARR-TIME} = 31, \text{DEP-TIME} = 32 \rangle$. Next, LSR_{10} forwards the label timing message to LER_5 .



In step-8, LER₅ (egress) receives the timing message from LSR₁₀ and extracts its corresponding hop from the ER hop and extracts the pair <35, 36> from the label stack. The corresponding entry to (LSPID = 10) in the FIB is updated with <ARR-TIME = 35, DEP-TIME = 36>. By the completion of this process, the LSP between LER₁ and LER₅ become time-scheduled.

C. Alternate Distributed DCN@MPLS Route Schedule Distribution

This model is depicted from the previous route schedule distribution model described in the previous section. However, this mode differs from its predecessor only by the architectural specifications of the LSRs.

Each LSR in the MPLS network domain tier has an extended FIB with two additional fields with the START-TIME and END-TIME. The field START-TIME denotes the starting time of a specific label corresponding to an input/output label-pair in the FIB. Moreover, the END-TIME determines the expiration time of that input/output label pair.

As a result, when a label is received by an LSR, the FIB is interrogated, and based on the LSR local time an action will be taken. If the time is within [STAR-TIME, END-TIME] an appropriate action is taken such as label push, pop or swap, otherwise dropped. Finally, the architectural specification of LSRs under this model is illustrated in Fig.20.

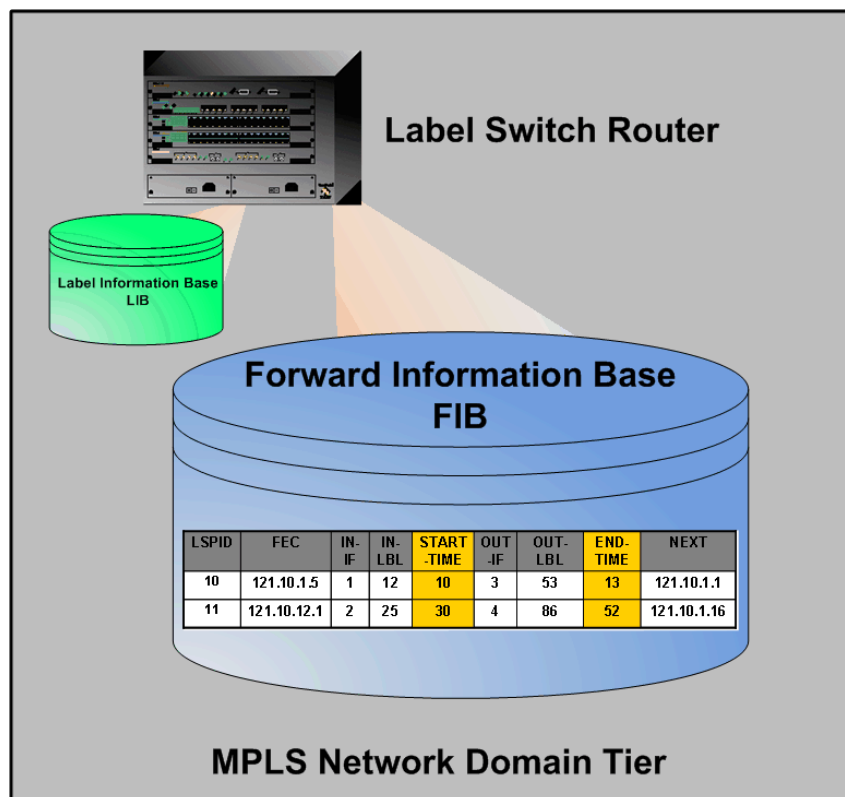
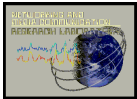


Fig.20: LSR FIB Organization



VIII. Conclusion and Future Work

The Internet2 networking model will be the future determinant of network backbone infrastructures, services and applications trends of the next Internet era. Next generation Internet backbones infrastructures will be high-performance proving network capacities beyond the limits of imagination reaching Terabits per second. Given their capabilities, Internet applications will become bandwidth-intensive demanding massive data transmission volumes in the orders of Terabytes per day. Moreover, on-demand time-scheduled services will become the trend of high-performance Internet services.

Based on the near future trends, it is strongly anticipated that the *Dynamic Circuit Networking (DCN)* is the key networking model of the next generation Internet infrastructures. The DCN is further envisioned to be the model of the future high-performance commercial Internet services. As a result, emerging switching-routing protocols like MPLS would enable on-demand DC-based services transparently at the network and transportation levels.

On-demand network arbitration forms an interesting challenge to DCN architecture and protocol design. This is because of its two sub-problems. The former is algorithmic, which is task of finding the optimal dynamic circuit between the source and the destination nodes. The latter is protocol-mechanic, which is the problem if collecting and disseminating route schedule information from and to the DCN domain.

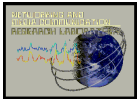
In this technical report, we presented a network architectural model that implements dynamic circuit operation DCN at the Multi Protocol Labeling Switching MPLS domains namely *DCN@MPLS*. In addition, the MPLS protocol extensions are implemented by the DCN@MPLS route scheduling tier. These protocol extensions determine the set of label message signaling that enables time-scheduled route information to be distributed to the MPLS domain. More particularly, these extensions are related to the label distribution process handling *Constraint-Routing Label Distribution Protocol (CR-LDP)*.

On the bases of the achieved contributions described throughout this work, we have arrived to the following conclusions. First, DCN is strongly anticipated to be the networking model of the Terabit Internet era and on-demand routing paradigm will be a predominant aspect. Second, on-demand routing in DCN environments is an instance of scheduling problem, whose heuristic solution aims to optimize the objective function through incorporating four key operations: task scheduling, optimal routing, per-hop schedule computation and resource allocation. Third, the expandability of the MPLS architecture and the CR-LDP protocol seamlessly enables DCN operation at MPLS. Therefore, the DCN@MPLS architecture has achieved the advantage to be the unprecedented commercial DCN model of tomorrow's high-performance Internet services.

The future works aim to extend the research goals achieved in this work and yet propose new DCN-based networks model. In the future research projects we will focus on achieving two contributions. Simulating the DCN@MPLS architecture, we will examine two types of heuristics: task selection (*H1*) and optimal route computation (*H2*). We will conduct a number of commercial DCN-based scenarios using the DCN@MPLS simulator to evaluate the performance of *H1* and *H2* heuristics. Beyond the scheduling-based DCN@MPLS routing, we further identify a new challenge related to role of resource limitedness on the overall QoS and its influence of scalability. We remodel a sharable scheduling-based routing scheme that envisions the DCN as an instance of *Disruption Tolerant Network (DTN)*, namely *Disruption Tolerant-DCN (DT-DCN)*. According to the DTN context, link intermittency is logical due to the resource sharable aspect, which limits the link availability time periods. Never the less, such intermittency is predictable and hence a set of *store-and-forward* based per-hop route scheduling algorithms are to be proposed. Finally, after achieving the latter research contributions, we look forward to build a physical testbed of DCN@MPLS over the PlanetLab [5] planetary network domain.

IX. Reference

- [1]The Internet2, Wikipedia, url: <http://en.wikipedia.org/wiki/Internet2>



Technical Report 2009-02-01
Internetworking and Media Communications Research Laboratories
Department of Computer Science, Kent State University
<http://medianet.kent.edu/technicalreports.html>

- [2] Internet2 Consortium, "Internet2's Dynamic Circuit Network", public document, url: www.internet2.edu/pubs/200710-IS-DCN.pdf, 2008.
- [3] Rosen E., Viswanathan A. and Callon R., "**Multiprotocol Label Switching Architecture**", RFC 3031, January, 2001.
- [4] Jamoussi B., Andersson L., Callon R., Dantu R., Wu L., Doolan P., Worster T., Feldman N., Fredette A., Girish M., Gray E., Heinanen J., Kilty T. and Malis A. "**Constraint-Based LSP Setup using LDP**", RFC 3212, January 2002.
- [5] The PlanetLab Planetary Network, [url:www.planet-lab.org](http://www.planet-lab.org), 2008.